

QWT42-15

WR-42, 15W

Features:
* Low VSWR

Applications:
* Transmitters
* Antennas
* Laboratory Test
* Impedance Matching

Electrical

Frequency: 17.6~26.7GHz
Average Power: 15W
VSWR: 1.2 max.

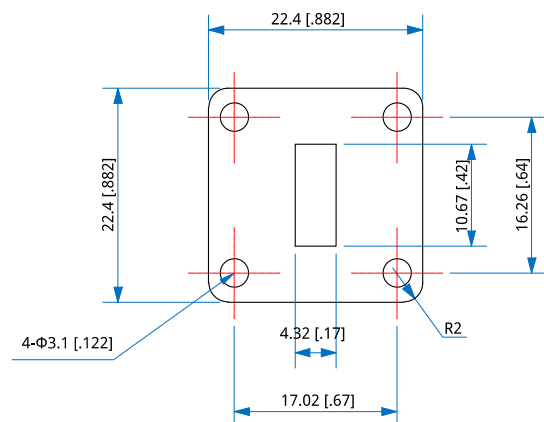
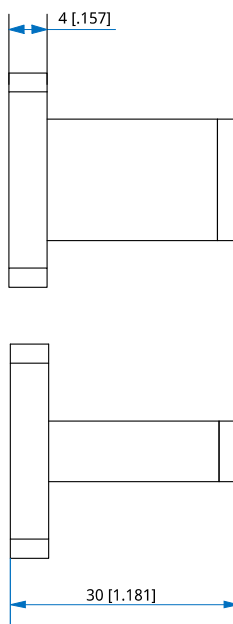
Mechanical

Waveguide Size: WR-42 (BJ220)
Flange: FBP220

Environmental

Temperature: -55~+125°C

Outline Drawings



Outline A

Unit: mm [in]
Tolerance: $\pm 0.5\text{mm}$ [$\pm 0.02\text{in}$]

How To Order

QWT42-15-Y-Z

Y : Material

Z : Flange type

Material naming rules:
A - Aluminum (Outline A)

Flange naming rules:
1 - FBP220 (Outline A)

Examples:

To order a small size waveguide termination, WR-42, 15W, Aluminum, FBP220, specify QWT42-15-A-1.

Customization is available upon request.